



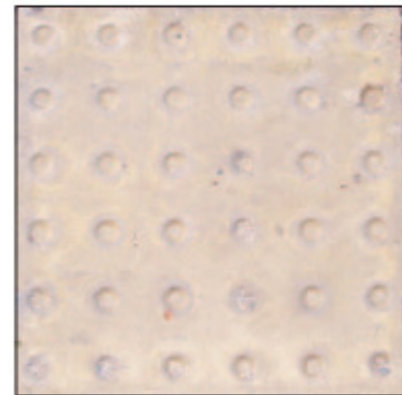
F. H. BRUNDLE

TACTILE FLOORING



Tactile Flooring is a 4mm thick GRP tile incorporating raised profiles to warn people when they are approaching a change in elevation such as railway platforms, pedestrian crossings, staircase assents and decent areas as well as many other applications.

Tiles are glued and screwed to the existing substrate therefore eliminating the need of costly excavation.

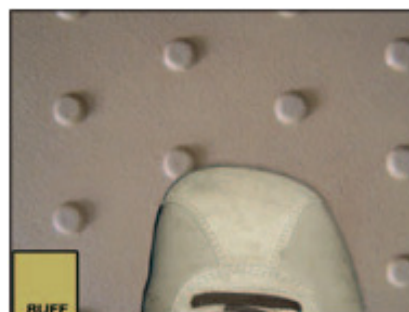


Tactile Flooring is available in three surfaces and are available in 400mm x 400mm standard tiles.

TYPES AVAILABLE



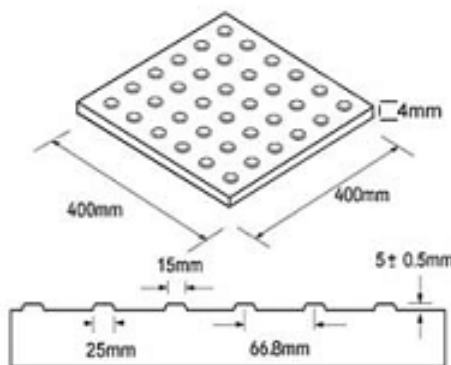
ON STREET BLISTER
Code: 33018



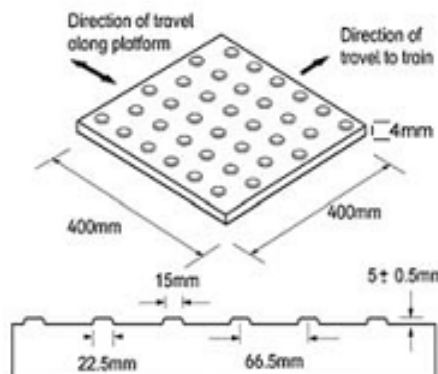
OFF STREET BLISTER
Code: 33019



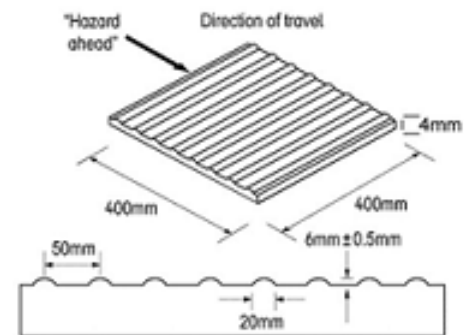
CORDUROY
Code: 33020



Blister On-Street Tactile



Blister Off-Street Tactile



Corduroy Tactile

APPLICATIONS



CORDUROY



OFF STREET BLISTER



ON STREET BLISTER

FIXING KIT



Code: 33021

SOUTH & WEST
502 Millbrook Road,
Third Avenue, Millbrook,
Southampton,
SO15 0JX
Tel: 023 8070 3333
Fax: 023 8070 5555

NORTH WEST
Haydock Lane,
Haydock Industrial Park,
St. Helens,
WA11 9XE
Tel: 01942 86 88 88
Fax: 01942 86 88 99

LONDON & SOUTH EAST
Lamson Road,
Ferry Lane North,
Rainham, Essex,
RM13 9YY
Tel: 01708 25 35 45
Fax: 01708 25 35 50

WEST MIDLANDS
Unit 6, Dorset Road,
Saltley Business Park,
Saltley, Birmingham,
B8 1BG
Tel: 0121 327 8999
Fax: 0121 327 85555

EAST MIDLAND & NORTH
Condor Road,
Quarry Hill Ind. Estate,
Ilkeston,
DE7 4RE
Tel: 0115 930 2070
Fax: 0115 951 2455

SCOTLAND
37 St. Clair Street,
Edinburgh,
Scotland,
EH6 8LB
Tel: 0131 656 7400
Fax: 0131 656 7499