



## THE APPROVED BLIND STEELWORK FIXING



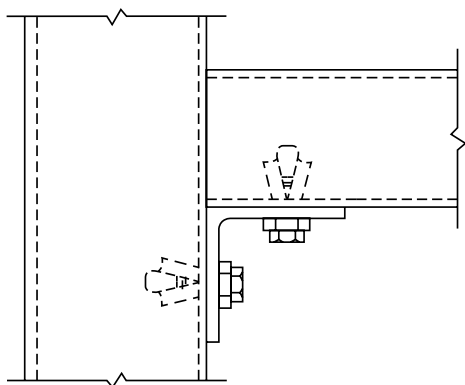
**BoxBolt** is a fully tested and approved blind fixing solution for connecting to hollow section steelwork or where access is restricted to one side only. **The BoxBolt** fixing is suitable for use with rectangular, square and even circular hollow sections.

**BoxBolt** is available in three finishes which are; zinc plated for the less aggressive environments, hot dip galvanised for the more aggressive environments and stainless steel for the most arduous of applications. These finishes combined with three lengths of **BoxBolt** make it extremely flexible to suit its environment and application.

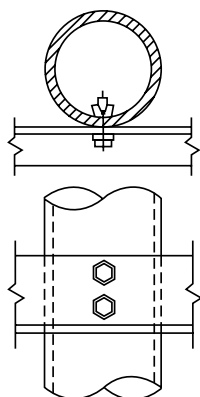
- Zinc plated, hot dip galvanised and stainless steel finishes in stock
- Large overlapping fixing thickness range
- LR type approved
- DIBt approved
- Guaranteed safe working load
- 5 to 1 factor of safety

- Hexagonal head for ease of installation
- Optional BoxSok™ tool for ease of installation
- M6 version available
- Various head styles available to order
- No welded inserts required
- No internal sleeves needed

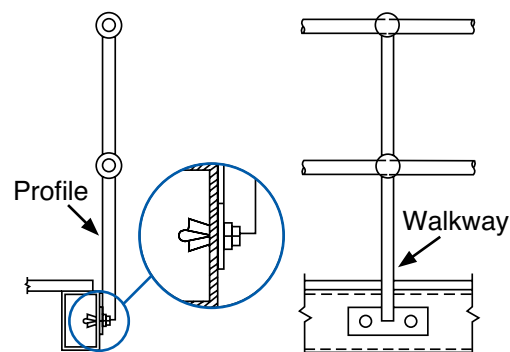
## BOXBOLT® APPLICATION EXAMPLES



**Structural** tube to structural tube connected with an angle bracket.



**Angle to Tubular Post** the **BoxBolt** is suitable for most profiles of structural tube, including circular sections.



The **BoxBolt** can be used to connect any type of bracket, such as a mounting plate for hand railing as shown.

# BOXBOLT® TECHNICAL DATA

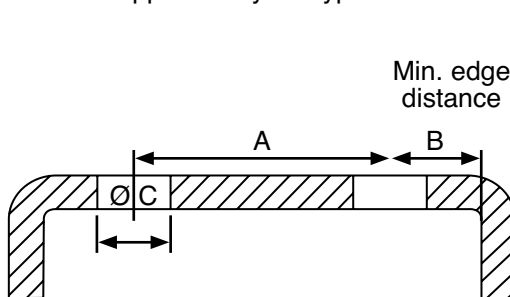
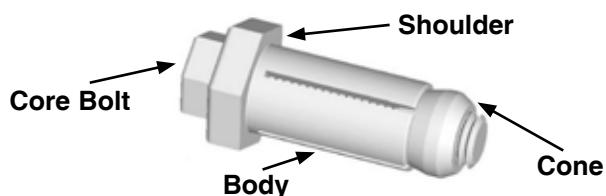
Part Number & Description			Dimensional information								Load information				
BoxBolt Size	Code	Size	Setscrew Length mm	Fixing Range dim x		Across Flats of Shoulder mm	Shoulder Thickness mm	Dim A	Dim B	Hole Size ø c	Bolt dia.	Thickness of material being connected to mm	Safe Working loads (kn)		Torque (Nm)
				Min	Max								Tensile	Sheer	
M6	10BQ1Z06	1	45	3	29	17	5	30	11	11 + 1.0, - 0.25	M6	3.0	2.2	5	19
M8	10BQ1_08	1	50	3	26	22	6	35	13	14 + 1.0, - 0.25	M8	5.0	2.7	7	25
	10BQ2_08	2	70	12	46							6.3 or 8.0	4.5		
	10BQ3_08	3	90	24	66							10.0 or 12.5	6.0		
M10	10BQ1_10	1	50	3	23	24	7	40	15	18 + 1.0, - 0.25	M10	5.0	4.5	13	45
	10BQ2_10	2	70	15	43							6.3	8.4		
	10BQ3_10	3	90	30	63							10.0 or 12.5	11.5		
M12	10BQ1_12	1	55	3	25	26	8	50	18	20 + 1.0, - 0.25	M12	5.0	4.5	15	80
	10BQ2_12	2	80	18	50							6.3	7.8		
	10BQ3_12	3	100	36	70							8.0	13.1		
												10.0 or 12.5	15.4		
M16	10BQ1_16	1	70	3	35	36	9	55	20	26 + 2.0, - 0.25	M16	5.0	6.4	35	190
	10BQ2_16	2	100	24	60							6.3	8.2		
	10BQ3_16	3	120	48	80							8.0	13.9		
												10.0	23.7		
												12.5	31.0		
M20	10BQ1_20	1	100	3	42	46	11	70	25	33 + 2.0, - 0.25	M20	6.3	8.0	40	300
	10BQ2_20	2	120	30	72							8.0	15.3		
	10BQ3_20	3	150	60	102							10.0	28.4		
												12.5	43.7		

BQ1Z06 is tested at an external test house but is not approved by LR type or DIBt.

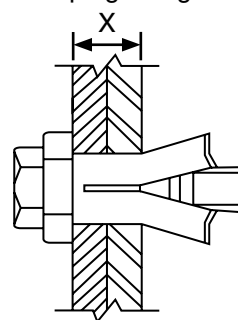
Select the type of finish you require on the **BoxBolt** by replacing the \_ in the code with a **Z** for zinc plated, a **G** for Hot Dip Galvanised or a **S** for Stainless Steel.

Example: **BQ2G12** is a **M12 BoxBolt** size **2** in **Hot Dip Galvanised** Finish.

**Note:** Min edge distance = Dim B plus the thickness of hollow section



Clamping Range



- Do not exceed the Safe Working Loads (SWL) specified
- All loads include a 5:1 Factor for Safety.
- The tensile load of the BoxBolt is based upon the strength of the structure being connected to. Please consult a licensed structural engineer to establish the load for steel sections other than those shown above.

The **BoxSok** installation tool (patent applied for) is a unique installation tool for the **BoxBolt** fixing.

The **BoxSok** eliminates the need for two tools to install the **BoxBolt**; this considerably speeds up the installation process and also reduces the risk of trapping hands between two tools. The **BoxSok** device is available to suit all **BoxBolt** diameters and is driven with a 1/2" square drive.



BoxSok™

Whilst every effort has been made to ensure the accuracy of the information supplied. F.H.Brundle cannot be held responsible for any errors or omissions. This product must only be employed for its original intended use. Any other use is wrong and potentially dangerous. Installation must be carried out in full compliance with current regulations. F.H.Brundle cannot be held liable for any damages resulting from wrongful, erroneous or negligent use.

Southampton

Rainham

Ilkeston

Birmingham

Haydock

Edinburgh

Glasgow

Tel: 023 8070 3333  
Fax: 023 8070 5555

Tel: 01708 25 35 45  
Fax: 01708 25 35 50

Tel: 0115 930 2070  
Fax: 0115 951 2455

Tel: 0121 565 8282  
Fax: 0121 565 8292

Tel: 01942 86 88 88  
Fax: 01942 86 88 99

Tel: 0131 335 5999  
Fax: 0131 335 5911

Tel: 0141 332 3231  
Fax: 0141 332 7325



**F.H.BRUNDL**  
SERVING THE TRADE SINCE 1889

[www.fhbrundle.co.uk](http://www.fhbrundle.co.uk)  
[sales@brundle.com](mailto:sales@brundle.com)