



Installation Instructions for Oildynamic Hinge System.

Series 57/57

Notes:

1. Maximum gate width 1000mm
2. Maximum gate weight 120kg
3. Neither of the above can be exceeded
4. Oildynamic hinges cannot be used in conjunction with any other hinges
5. Hinge to be removed from "U" bracket prior to welding or screw fixing

Post Installation:

Drill 48mm \varnothing holes for either the weld-in collars 0510 or fixing plates 6026.

If fixing to a wall or column then a hole depth of 30mm is required.

Gate Installation

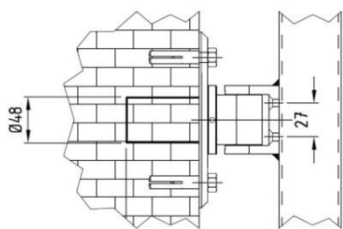
- Screw the hinges fully into the post fittings ensuring that the speed adjustment screws are facing upwards.
- Adjust the gate vertically by using the tommy bar into the adjustment ring.
- Lift the gate up to the "U" brackets and mark the fixing positions.
- Drill holes for the "U" bracket if bolt fixing **important** do not fix / weld the "U" bracket at this stage.
- Using the tool provided as a tommy bar; insert the thick end into one of the back holes of the "U" bracket and turn to the gate open position.
- Remove the Allen key bolts holding the "U" bracket to the hinge body ensuring the spindle stays in the gate open position.
- Bolt fix or weld the "U" brackets to the gate.
- With the gate still in the open position reposition and refit the Allen key bolts.
- Open the closing speed screw by $\frac{1}{2}$ turn and with the gate closed mark and fit magnetic lock if required.

Speed Adjustment

Close the speed adjustment screw fully on one hinge. Adjust the speed of the other hinge by half opening the gate and turning the screw clockwise to decrease or anticlockwise to increase the speed. Adjust the speed of the other hinge by gradually turning the screw anticlockwise until both hinges have the same speed.

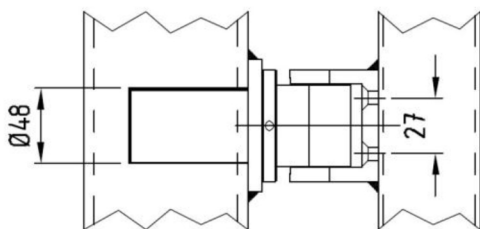
Important: Do not open the speed valve screw past the surface of the hinge body as this may cause the hydraulic oil to leak. If this occurs, the manufacturers will not accept any liability for any resulting malfunction of the hinge.

Fixing into Brickwork



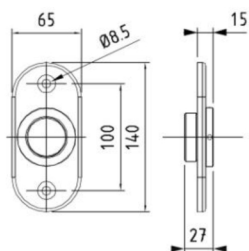
Depth of Bore into Brickwork for 57 Hinge = 30mm
Gap from Face of Brickwork to Edge of Gate = 65mm

Fixing into Metal Gatepost



Depth of Projection into Post for 57 Hinge = 30mm
Gap from Face of post to Edge of Gate = 65mm

Fixing Plate



Weld Fix Collar

