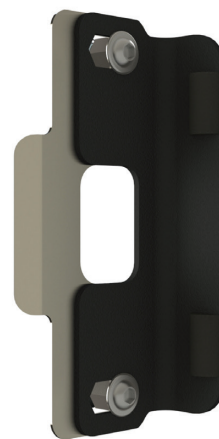


SUPERLOCK BOLT ON GAPLESS KEEP



SUITS ALL SUPERLOCKS

- Simple keep that fits between the gate and the post for use with the Superlock range of locks
- Slim profile enables a small gap between gate and post
- Improves gate appearance – narrow profile blends in well with the gate
- Versatile – simple and easy to fit to a wide range of applications



PRODUCT DETAILS

Product code:

Description:

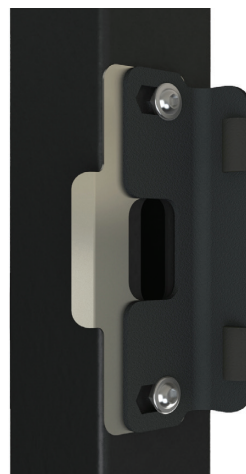
05GKE

Superlock gapless keep

Includes: Self expanding fixings for post bracket

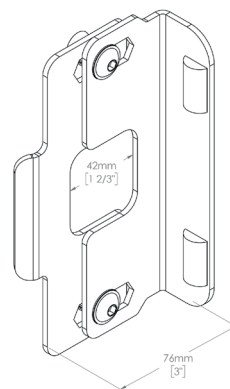
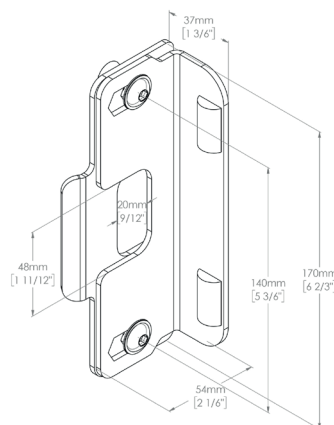


Expanding fastener



INSTALLATION

1. Drill 2 x 15mm ($\frac{5}{8}$ ") diameter holes at 140mm ($5\frac{1}{2}$ ") centres in the gate post for 2 x expanding fasteners.
2. Cut a slot in the post to receive the latch, at a minimum of 18mm ($\frac{3}{4}$ ") wide.
3. Insert expanding fasteners through the post bracket into the post, adjust as necessary and tighten with 5mm allen key.



Whilst every effort has been made to ensure the accuracy of the information supplied. F.H. Brundle cannot be held responsible for any errors or omissions. This product must only be employed for its original intended use. Any other use is wrong and potentially dangerous. Installation must be carried out in full compliance with current regulations. F.H. Brundle cannot be held liable for any damages resulting from wrongful, erroneous or negligent use.



F.H. BRUNDLE
SERVING THE TRADE SINCE 1889

Tel. 01708 25 35 45

sales@brundle.com

www.fhbrundle.co.uk

Mar 2023